

IR Bezel

Assembly Guide



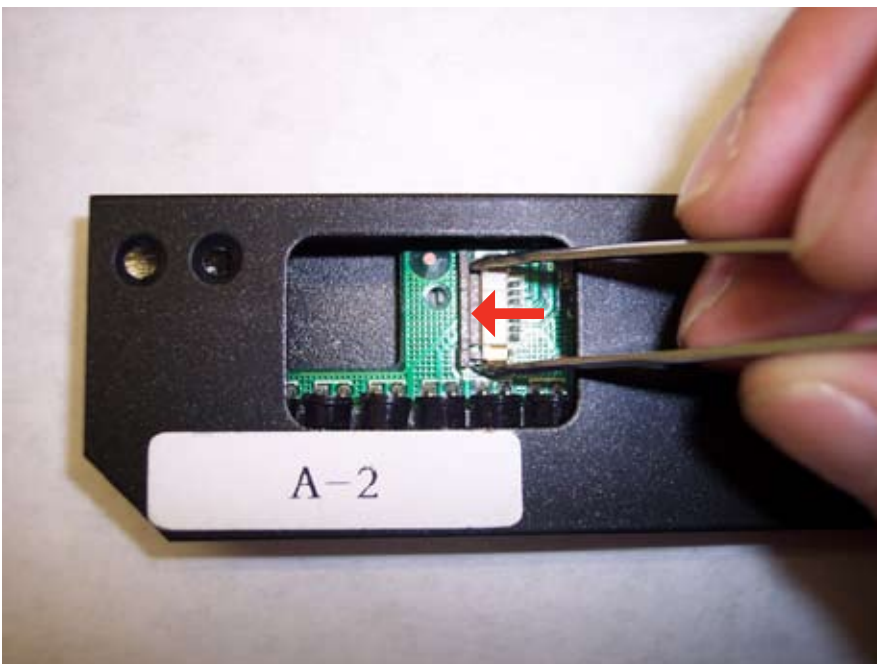
1 Unpack Frame's

Carefully unpack frame's matching each frame corner with it's corresponding frame reference as follows;
A-1 - A-1, A-2 - A-2, A-3 - A-3, A-4 - A-4



2 Unlock Ribbon Cable Connector Block

Slide the connector block open using tweezers.



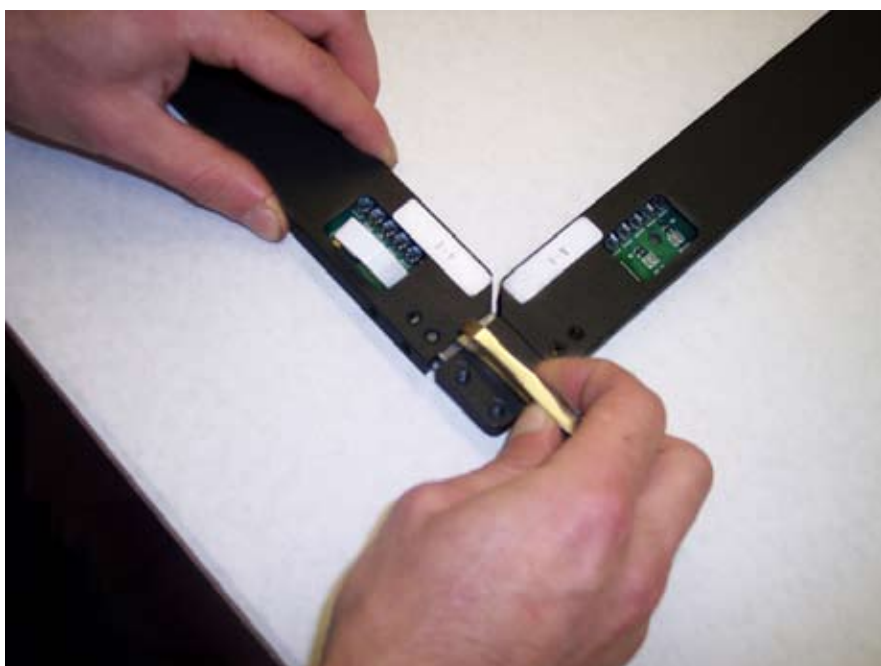
3 Connect Ribbon Cable's

Slide the blue contact strip on the white ribbon cable into the connector block, then lock the connector block. Pull any excess ribbon cable through.



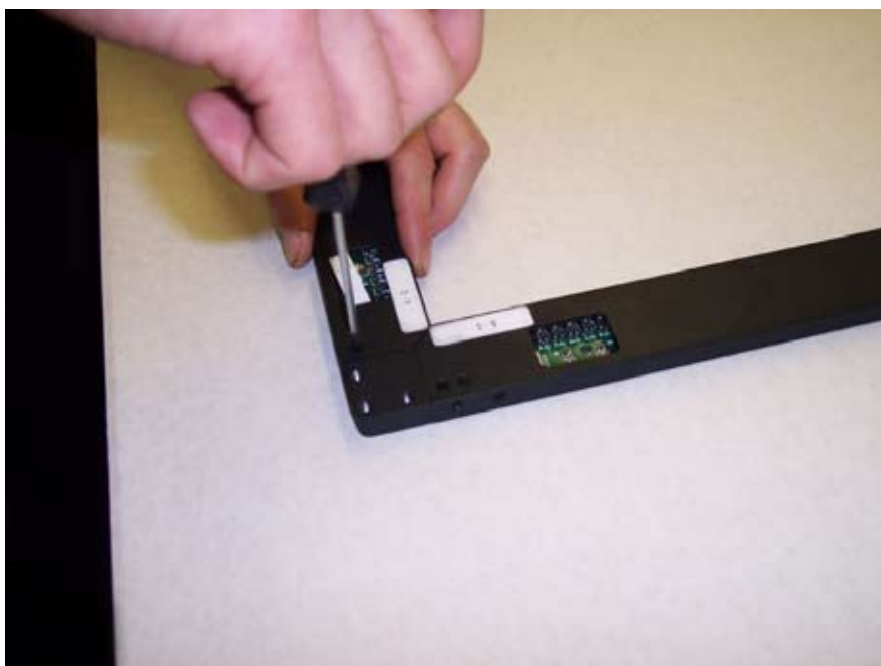
4 Connect Corner Frame

Connect the corner frame ensuring the screen hole's align.



5 Insert Screws

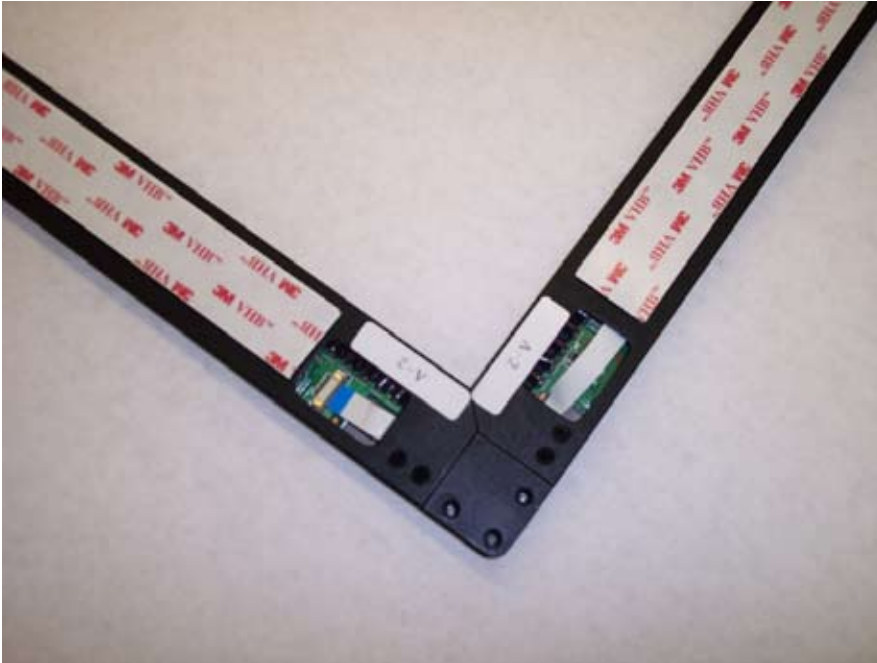
Insert supplied screws.



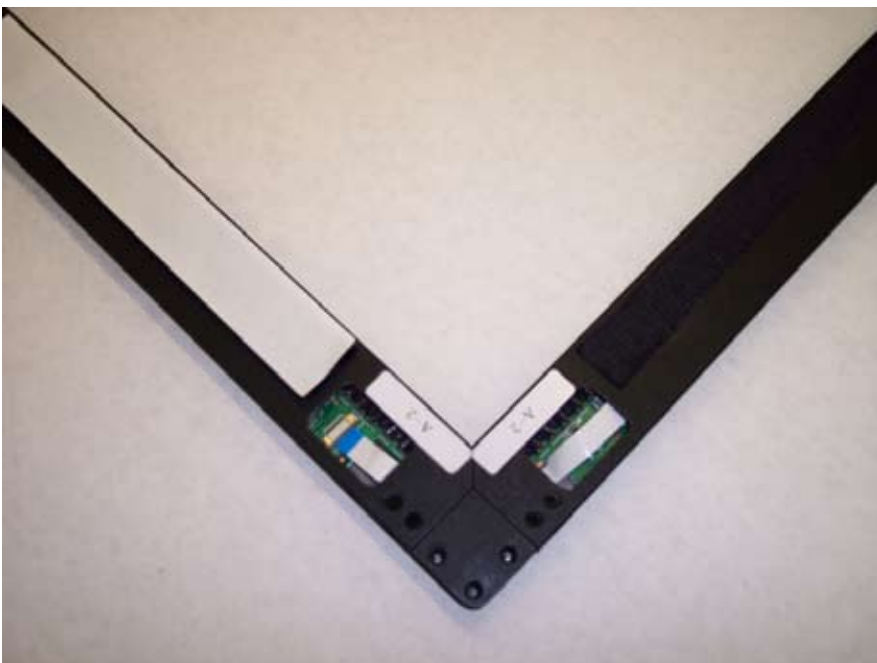
Repeat steps 1 - 5 for each of the 4 frame corners.

6 Apply Bezel

Our IR Bezels come complete with 3M VHB for permanent installations or velcro for removable installations.



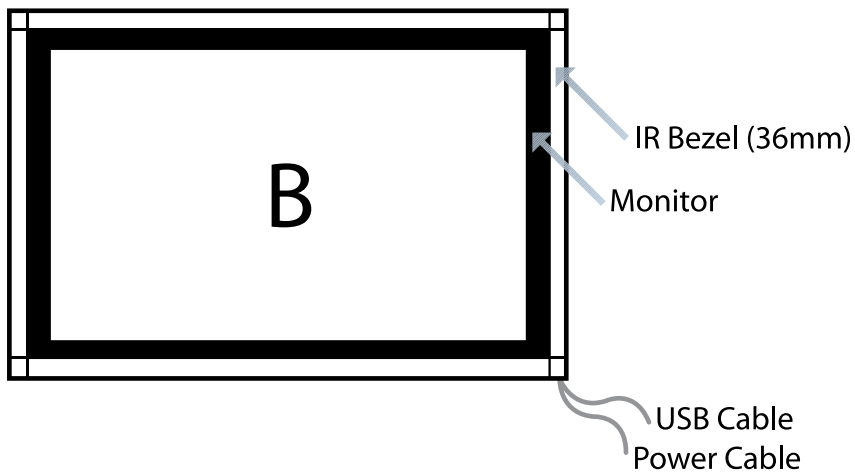
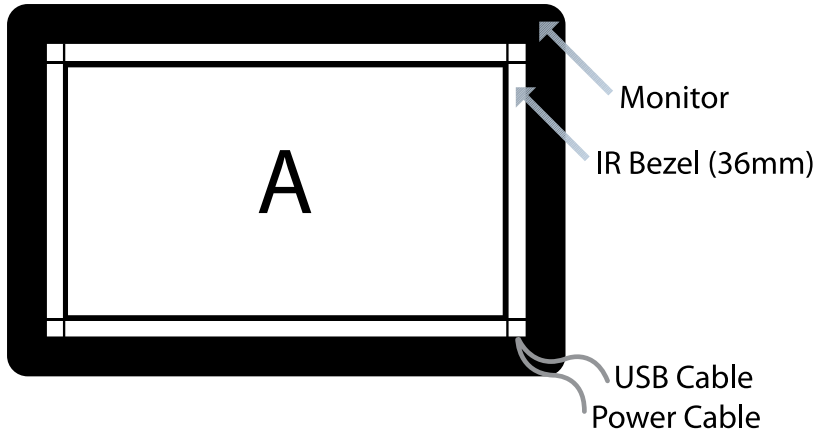
VHB



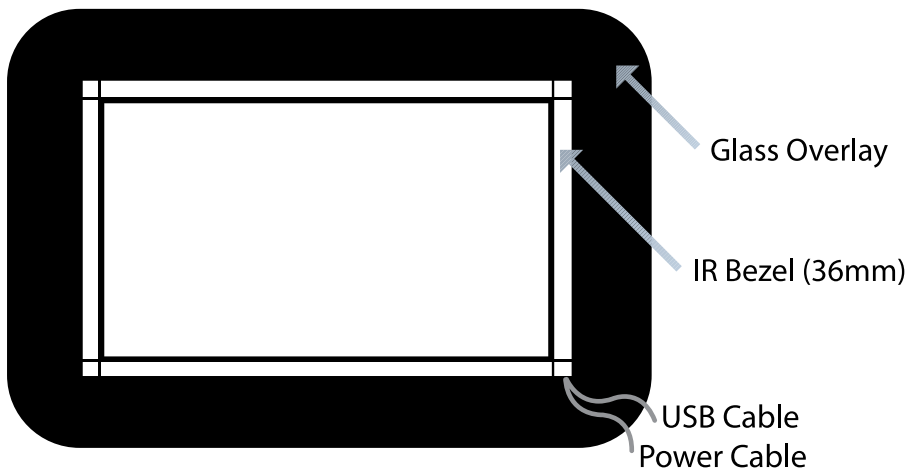
Velcro

7 Fixing Options

When fixing IR Bezel's to LCD or Plasma monitors please take note of the power switch and remote control IR Receiver location and install accordingly. Please find recommended installation options below:



An optional designer glass overlay is also available in a range of colour options.



8 Connect IR Bezel

After installing the software / drivers, connect the IR Bezel to an available USB Port on the PC. For further information on the software installation and configuration please see the *IR Bezel Software User Guide*.

