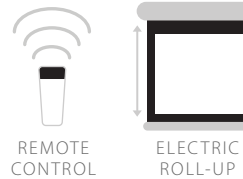
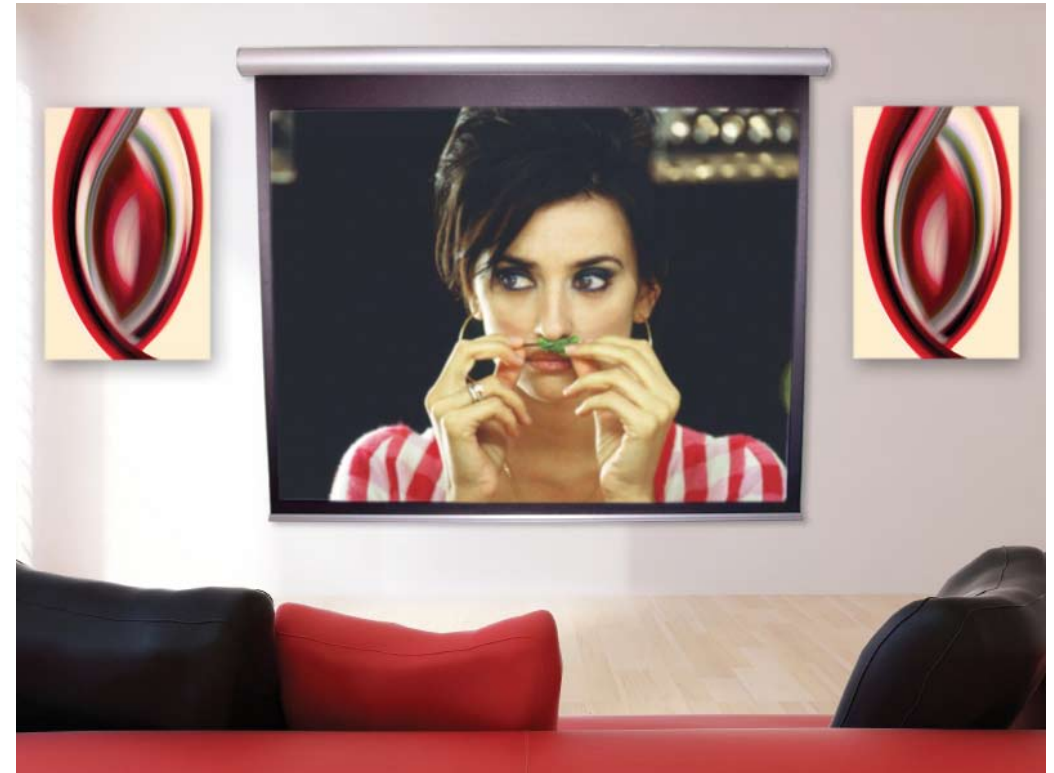


# DESIGNER ELECTRIC ROLL-UP



Pro Display offer a range of designer electric roll-up screens using standard projection cloth with a gain of 1 and a 180° viewing cone, ideal for both professional and home theatre use. A unique oval shaped aluminium housing and shaped decorative wall bracket, give this screen a sense of style and quality. This stylish screen solution integrates well with today's modern/contemporary interiors, adding a touch of class to any presentation room. A range of screen sizes are available in both 4:3 and 16:9 (widescreen) with black borders to suit.

Screens come complete with stylish shaped wall brackets and an RF hand-held remote control.



## FEATURES

- » Designer Aluminium Housing
- » Stylish RF Remote Control
- » Masked Black Borders
- » Decorative Wall Brackets

## BENEFITS

- » Available in 4:3 or 16:9 Aspect Ratio
- » Sizes from 84" to 114"
- » Optional High Contrast Grey Screen

## APPLICATIONS

- » Home Theatre
- » Meeting Rooms / Boardrooms
- » Auditoriums / Training Facilities
- » Schools Universities
- » Conference / Presentation Suites
- » Bars / Clubs / Leisure Facilities

## ACCESSORIES

- » Soundpod
- » Canvas Art Speakers